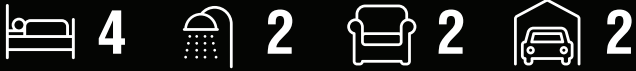
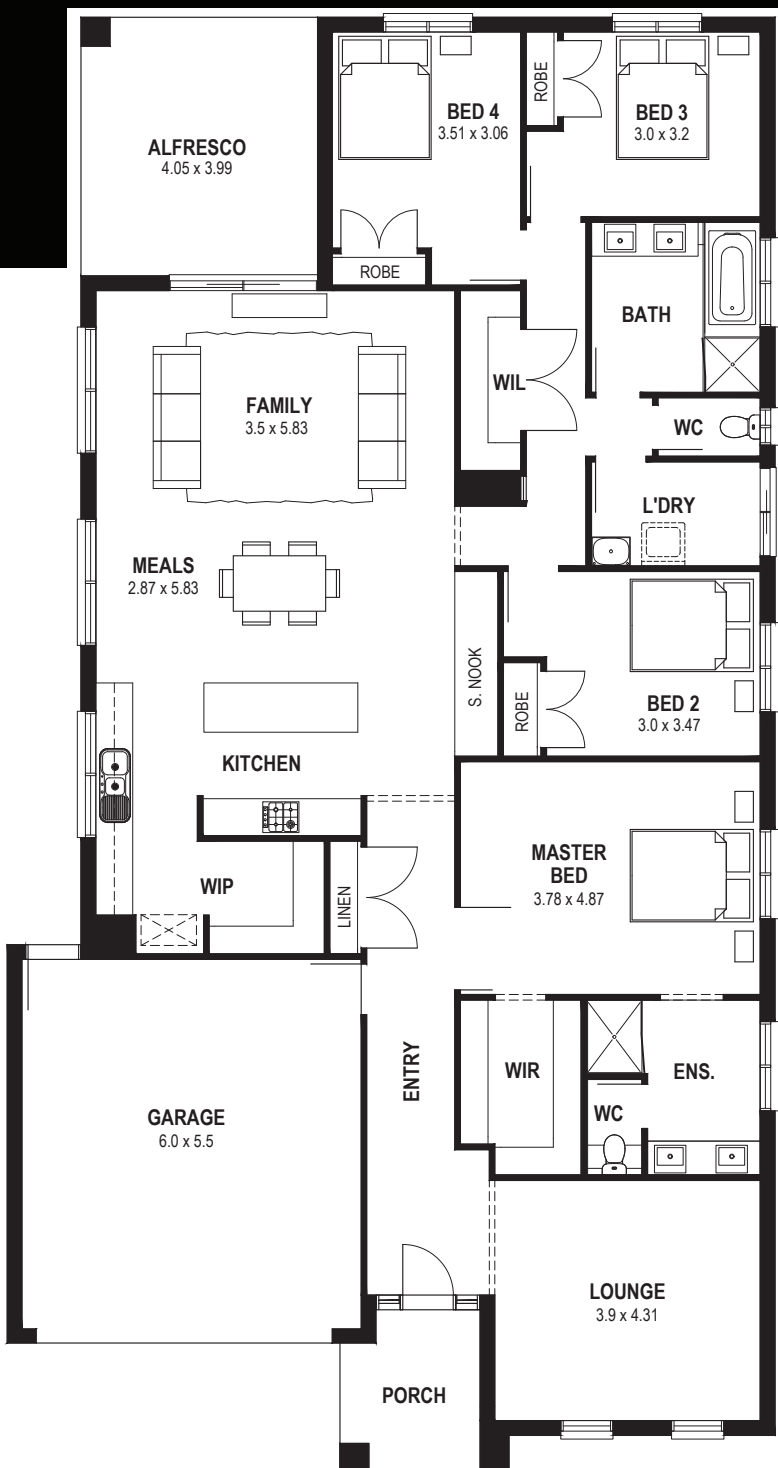


PATTERSON 29



The Patterson 29 has it all. This four bedroom home has been designed to build lasting family foundations. Wide open spaces are complemented by secluded zones, as the open-plan kitchen flows out onto a central dining & living area. The alfresco completes this fabulous design.

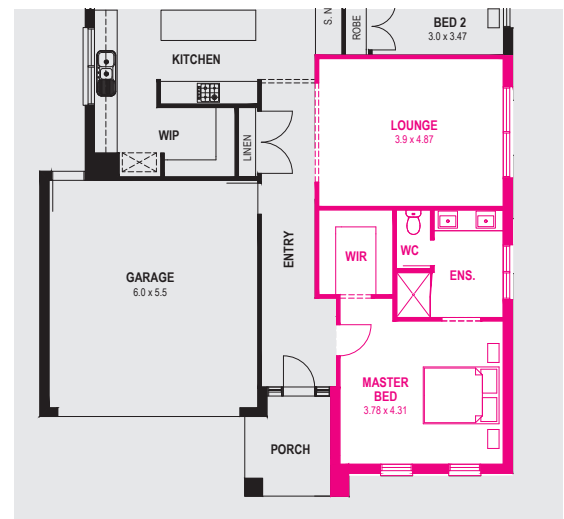


Dimensions

Fits 14m x 32m lots

Ground floor	207.04 m ²	22.29 sq
Garage	36.23 m ²	3.90 sq
Porch	6.12 m ²	0.66 sq
Alfresco	16.12 m ²	1.74 sq
Total	265.51 m ²	28.59 sq

Options



Master bedroom to front option