

TYSON 39



This well designed four-bedroom home is just waiting to be filled with the happy sounds of any family. With ample space to enjoy a quiet moment or entertain with friends, the Tyson includes a butler's pantry, a theatre room and an extensive open-plan kitchen, living and dining area. Make the Tyson 39 your forever home.

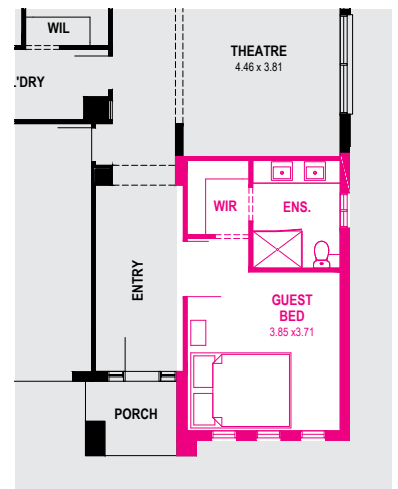
Dimensions

Fits 14m x 28m lots

Ground floor	165.11 m ²	17.77 sq
First floor	142.18 m ²	15.30 sq
Garage	36.24 m ²	3.90 sq
Porch	4.00 m ²	0.43 sq
Alfresco	16.07 m ²	1.73 sq
Total	363.60 m ²	39.14 sq



Options



Guest bedroom option