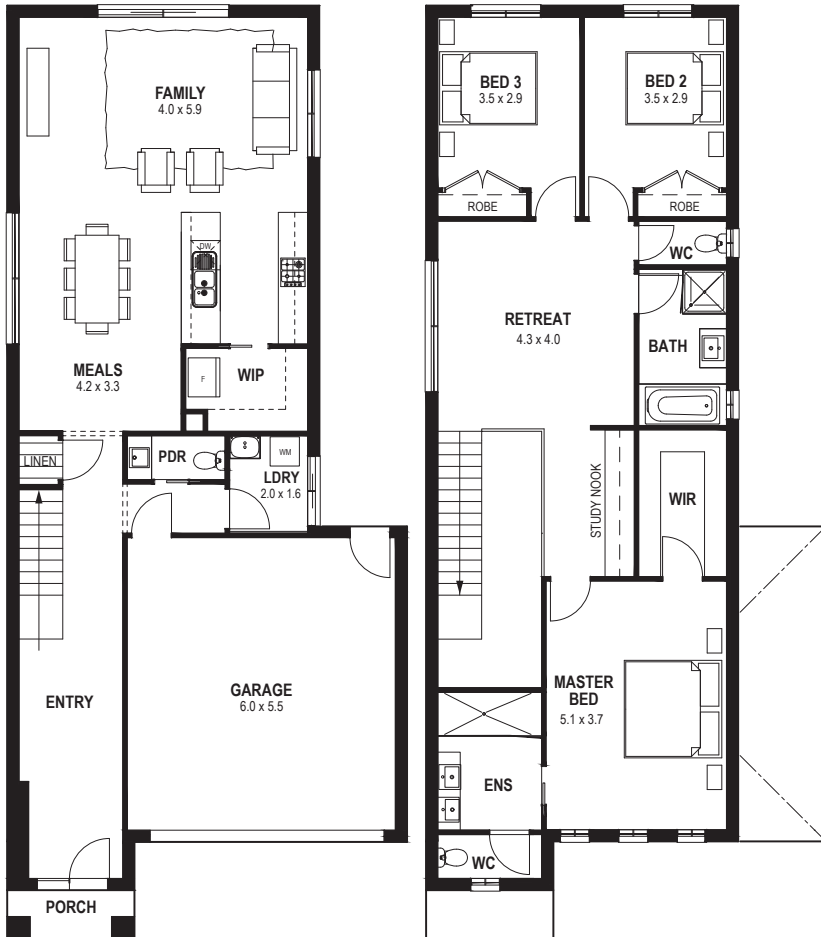


LEWIS 26



 **3** Bedrooms

 **3** Bathrooms

 **2** Living area

 **2** Parking

Dimensions

Fits 10m x 28m lots

Ground floor	86.80 m ²	9.34 sq
First floor	107.76 m ²	11.59 sq
Garage	36.16 m ²	3.89 sq
Porch	2.53 m ²	0.27 sq
Total	233.25 m²	25.09 sq

*Terms and conditions apply. Floor plans, facade images and photographs are for illustrative purposes only and may not represent the final product shown. Purchasers should refer to their new home sales consultant for more information. Visit www.first-place.com.au for full terms and conditions. CDB-U50038

MAKE *First-Place* YOUR ONLY PLACE.

For more information visit first-place.com.au or call 1800 1FIRST