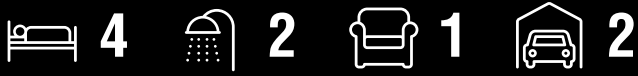
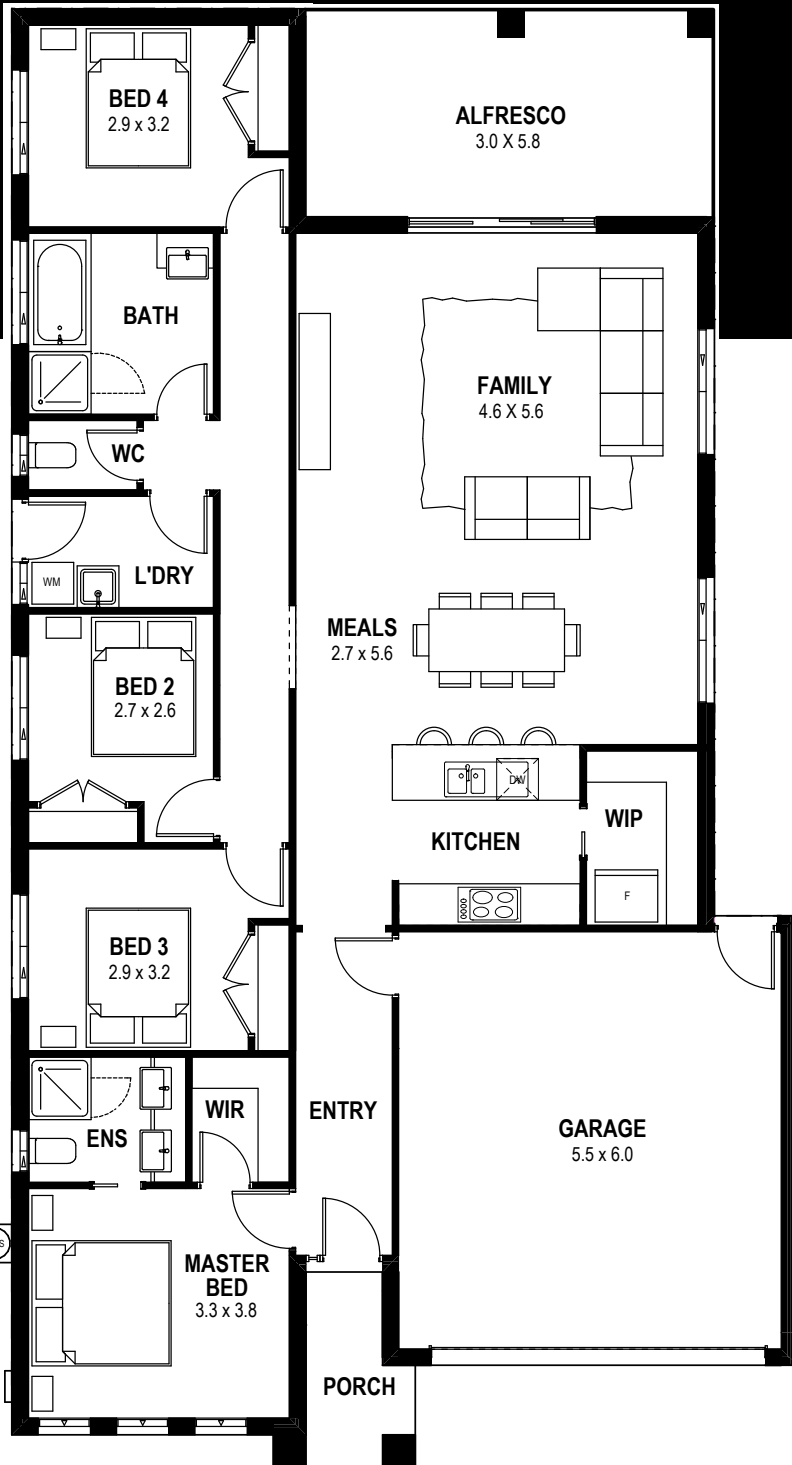


MAYWEATHER 23



Walk into The Mayweather, and you're immediately afforded a view of the large and light-filled living area, which flows into a well-sized alfresco space. With double garage, four bedrooms, bathroom and ensuite with dual vanities, the Mayweather offers an abundance of space and plenty of options. This home is flawless.

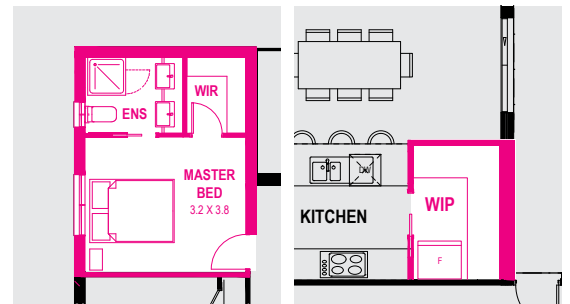


Dimensions

Fits 12.5m x 28m lots

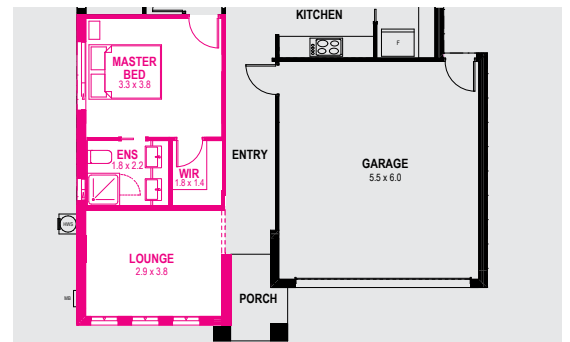
Ground floor	153.17 m ²	16.49 sq
Garage	36.17 m ²	3.89 sq
Porch	2.88 m ²	0.31 sq
Alfresco	17.10 m ²	1.84 sq
Total	209.32 m ²	22.53 sq

Options

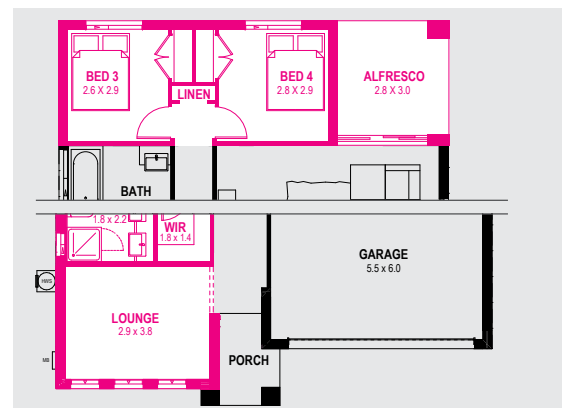


Master rear option

Butlers pantry (Base cabinet)



Front lounge option



4 Bedroom + 2 Living option