



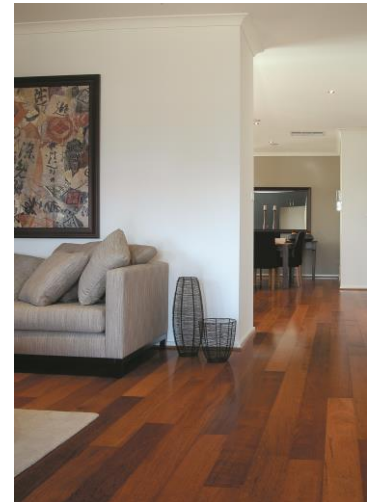
Unique Timber Floors®

CARING FOR YOUR FLOOR

Pre Finished Timber and Laminate floors are considered to be easy to maintain but like all floor surfaces they do require cleaning and a few precautionary practices to maintain their appearances and preserve their service life.

On a regular basis floors should be dry mopped with a static mop. Ensure with such cleaning that nothing hard rubs in the floor as it may mark it. These practices not only pick up any lint and dust but also grit that can be damaging to the floor surface. Similarly, if pets are to be inside it is necessary to ensure that nails are trimmed and paws clean thereby not introducing excessive grit. Any spill needs to be wiped up as soon as it occurs. Failure to do so can dull or discolour the finish and if left for a long period can damage the flooring.

Rugs and floor mats are also effective in trapping grit at doorways, both inside and outside, and reducing wear in high traffic areas. However do note that both the coatings and timber colour can change under the effect of UV light and this can cause colour differences under rugs. For this reason it is prudent to not use rugs for the first six months or so. Alternatively, moving rugs on a more frequent basis and at times furniture over this initial period and ensuring curtains and window covering filter sunlight; can assist in reducing these effects. Rugs should also not be rubber backed or have similar impervious backing. Not only can such products affect the floor finish but they can also prevent the floor's natural exchange of moisture vapour through the board surface. All rugs and floor mats also require regular cleaning.



Legs of movable furniture such as dining room chairs need to have protective felt pads to prevent scratching from occurring. When moving heavy objects such as furniture or appliances they need to be lifted into position to prevent bruising or scratching of the floor surface. Foot ware with high point loads such as stiletto heels will also damage timber floor surfaces and therefore management of this is necessary.

In addition to the above there are a number of practices not appropriate for Pre Finished Timber and Laminate floors and these are as follows.

Do not use cleaning methods or products not designed for timber floors such as scouring pads or cleaners that may contain abrasives, soaps, waxes, ammonia or silicon. Specific timber floor cleaning products are available and should be used.

Do not use steam mops (irrespective of what the product sales people may say) or any form of scrubbing machine.